



Legend:

-  Study Corridor
-  Drain Flow

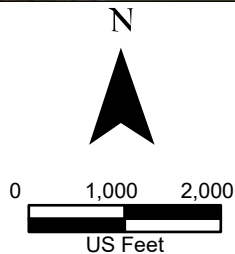
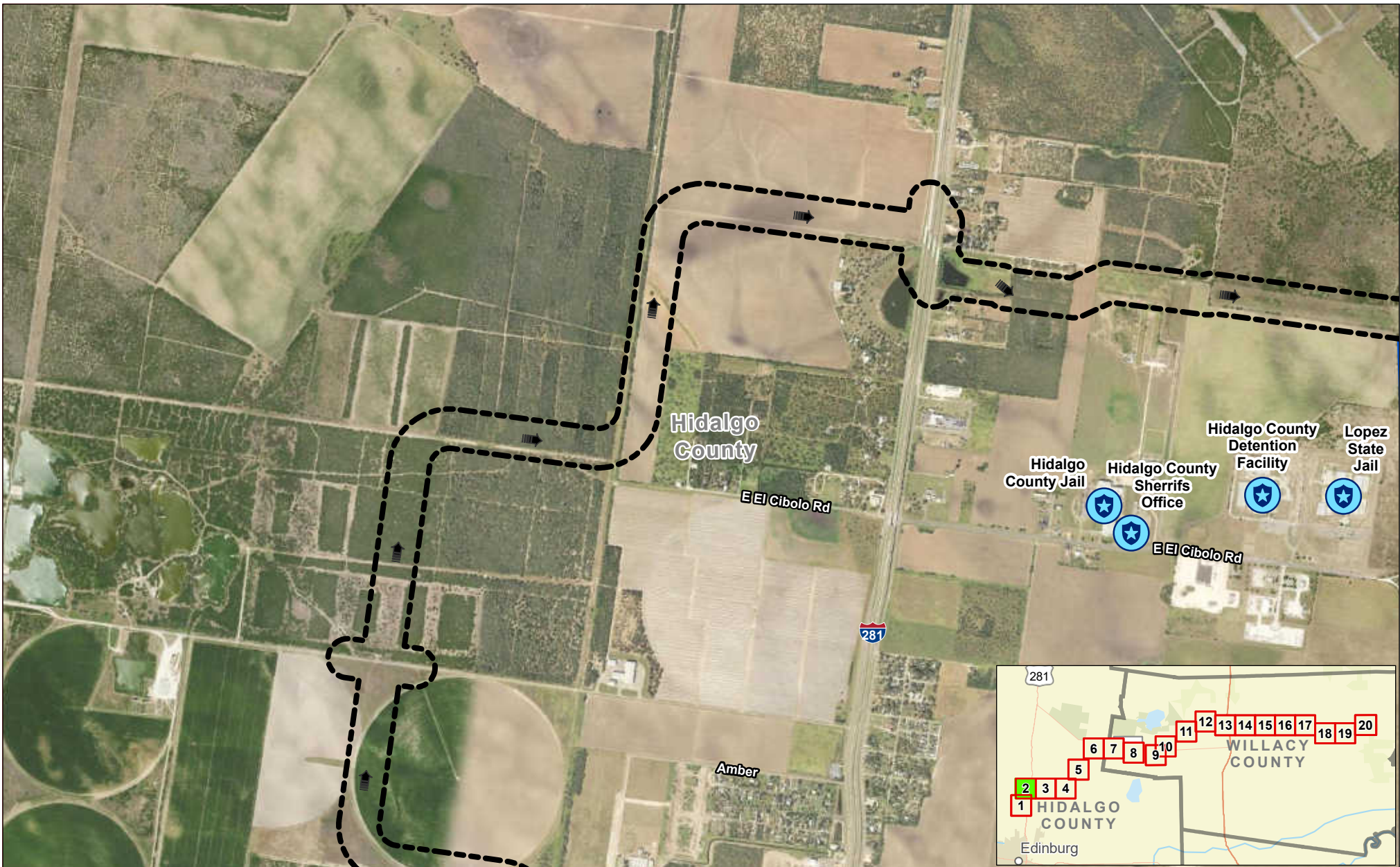


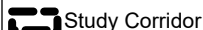

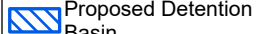
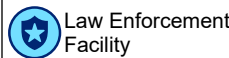
Exhibit 17 Alternative 1 Constraints Map Sheet 1 of 20 Raymondville Drain Project

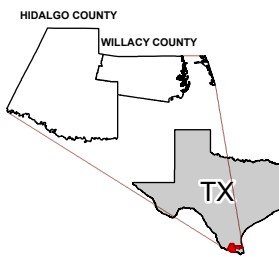
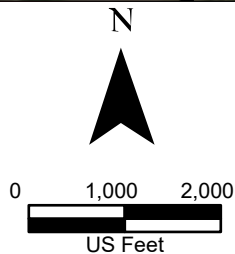
Author : Joel F. Aguirre Updated : 12/14/2023

DISCLAIMER: RRP Consulting Engineers makes no guarantees as to the accuracy of data used in the construction of this map.



Legend:

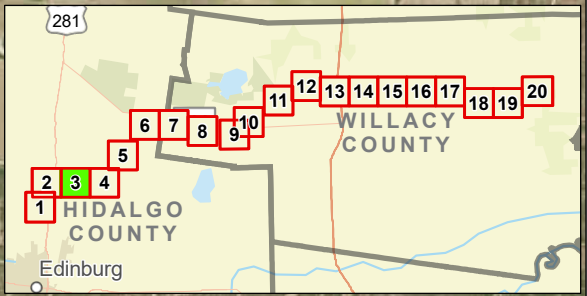
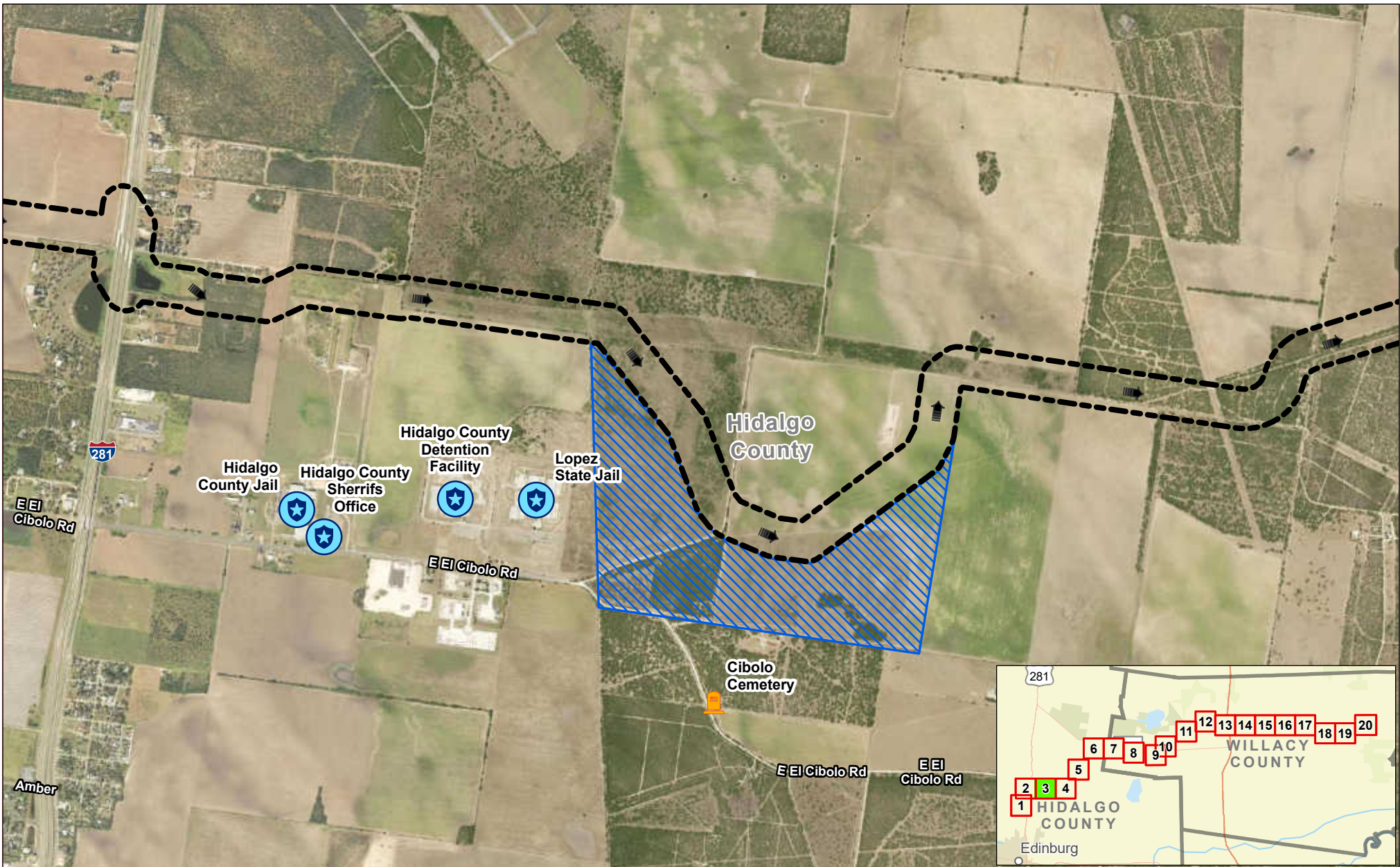
-  Study Corridor
-  Drain Flow
-  Proposed Detention Basin
-  Law Enforcement Facility



**Exhibit 17
Alternative 1
Constraints Map
Sheet 2 of 20
Raymondville Drain Project**

Author : Joel F. Aguirre Updated : 12/14/2023

DISCLAIMER: RRP Consulting Engineers makes no guarantees as to the accuracy of data used in the construction of this map.



Legend:

- Study Corridor
- Drain Flow
- Proposed Detention Basin
- Cemetery
- Law Enforcement Facility

N

0 1,000 2,000

US Feet

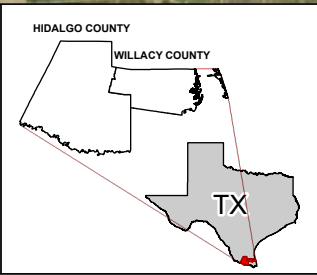
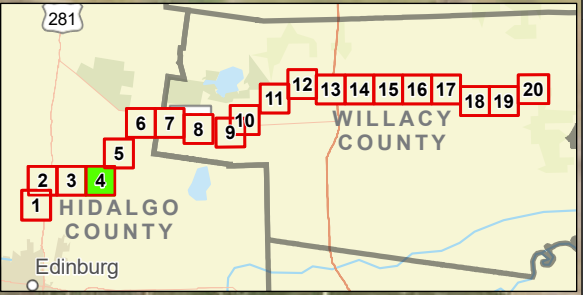
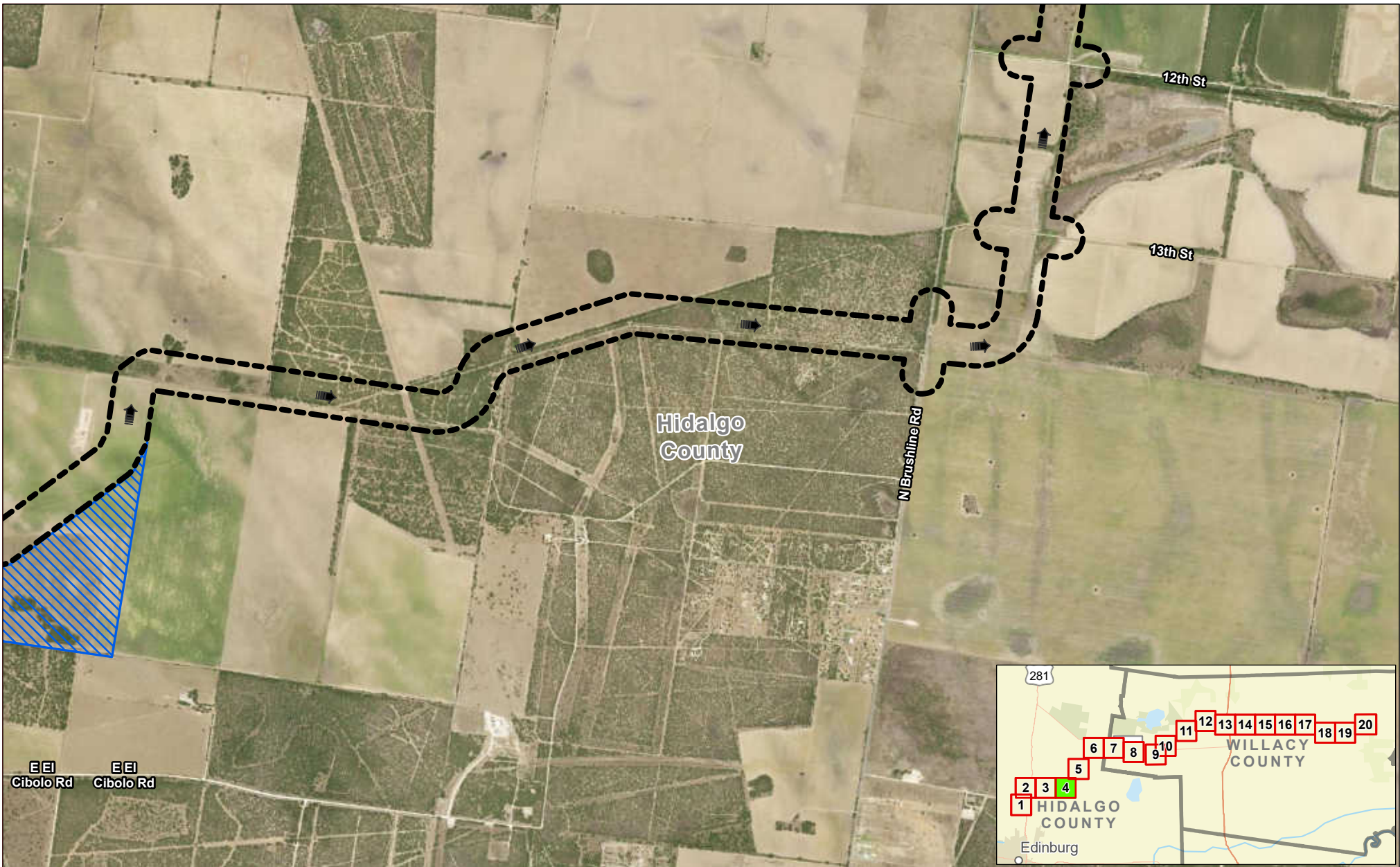


Exhibit 17 Alternative 1 Constraints Map Sheet 3 of 20 Raymondville Drain Project

Author : Joel F. Aguirre	Updated : 12/14/2023
--------------------------	----------------------

DISCLAIMER: RRP Consulting Engineers makes no guarantees as to the accuracy of data used in the construction of this map.

Path: S:\projects\440800_ProposedRaymondvilleDrain\Drawings\Sheet_3.aprx



Legend:

- Study Corridor
- Drain Flow
- Proposed Detention Basin

N

0 1,000 2,000

US Feet

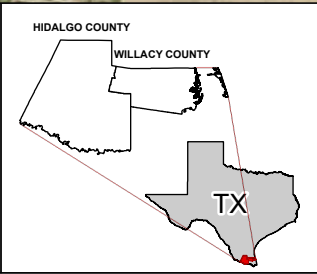
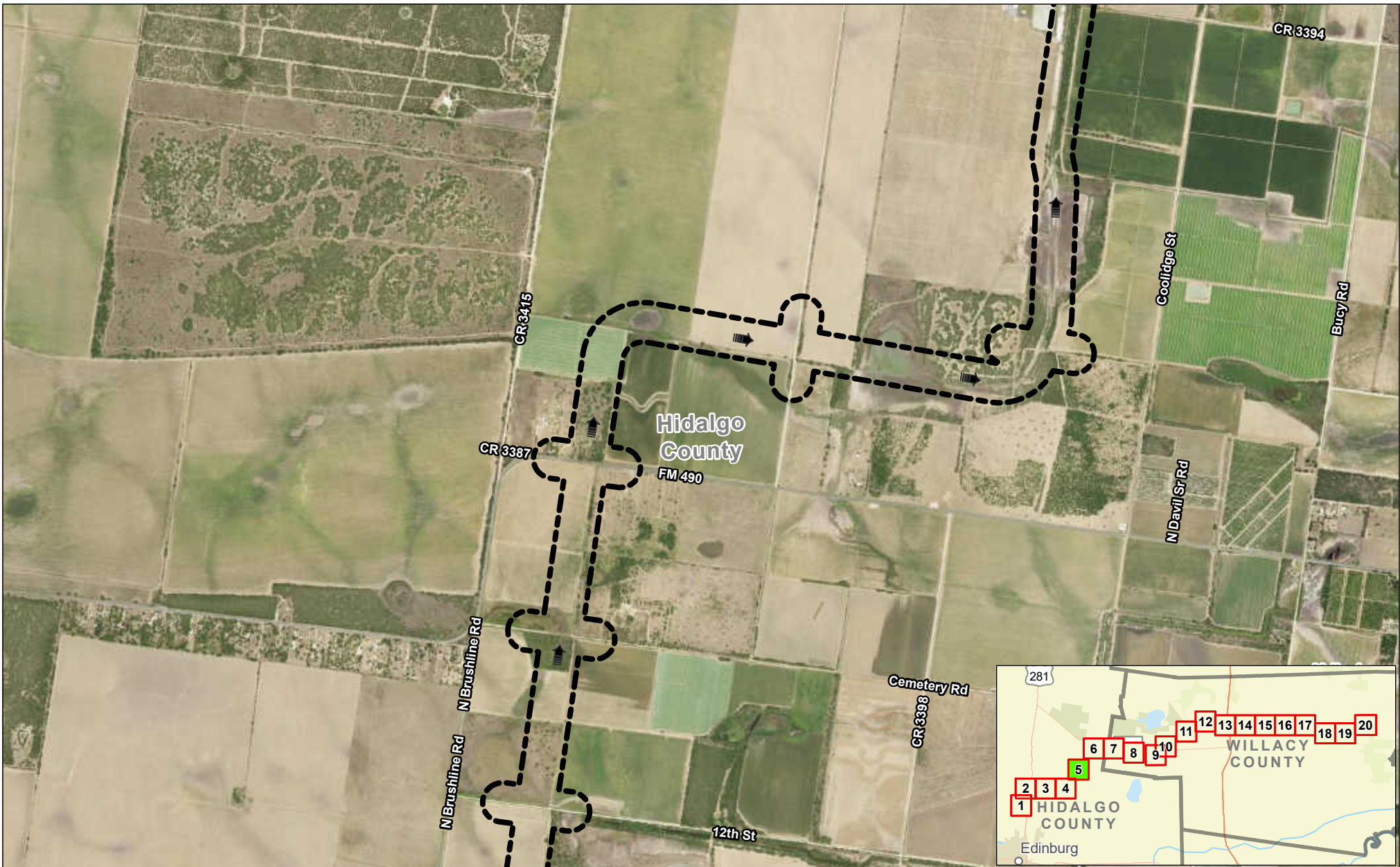





Exhibit 17 Alternative 1 Constraints Map Sheet 4 of 20 Raymondville Drain Project

Author : Joel F. Aguirre	Updated : 12/14/2023
DISCLAIMER: RRP Consulting Engineers makes no guarantees as to the accuracy of data used in the construction of this map.	

Path: S:\project\440800_Prop\Repository\GIS\PDF_Books\Exh_Sheet_4.aprx



Legend:

-  Study Corridor
-  Drain Flow
-  Cemetery

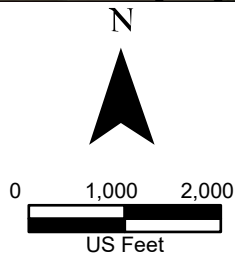
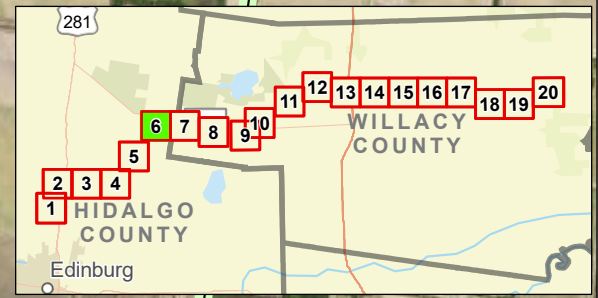


Exhibit 17 Alternative 1 Constraints Map Sheet 5 of 20 Raymondville Drain Project

Author : Joel F. Aguirre Updated : 12/14/2023

DISCLAIMER: RRP Consulting Engineers makes no guarantees as to the accuracy of data used in the construction of this map.



Legend:

- Study Corridor
- Drain Flow
- County Boundary

N

0 1,000 2,000

US Feet

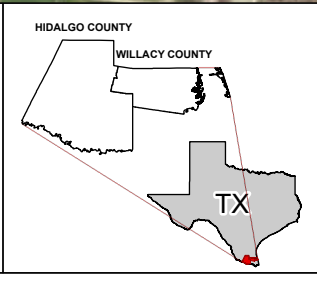
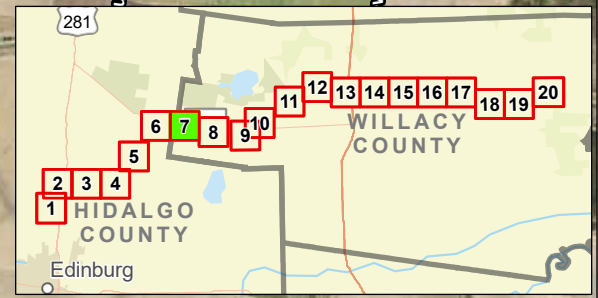
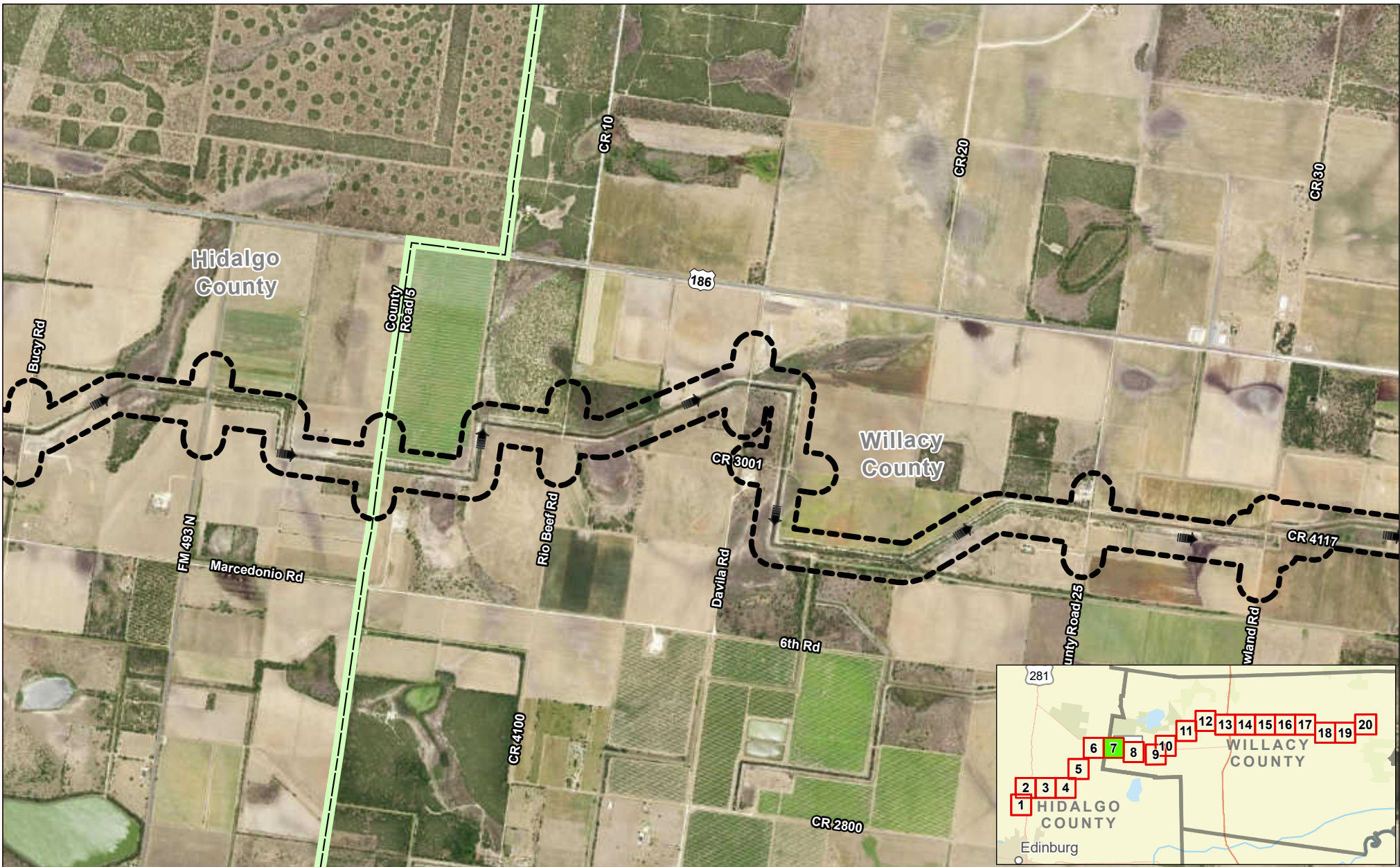


Exhibit 17 Alternative 1 Constraints Map Sheet 6 of 20 Raymondville Drain Project

Author : Joel F. Aguirre	Updated : 12/14/2023
--------------------------	----------------------

DISCLAIMER: RRP Consulting Engineers makes no guarantees as to the accuracy of data used in the construction of this map.

Path: S:\projects\4408000_Project\Raymondville\GIS\PDF_Export\Exhibit_Series.aprx



Legend:

- Study Corridor
- Drain Flow
- County Boundary

N

0 1,000 2,000

US Feet

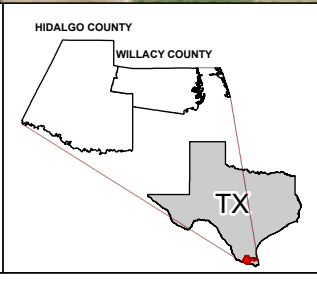
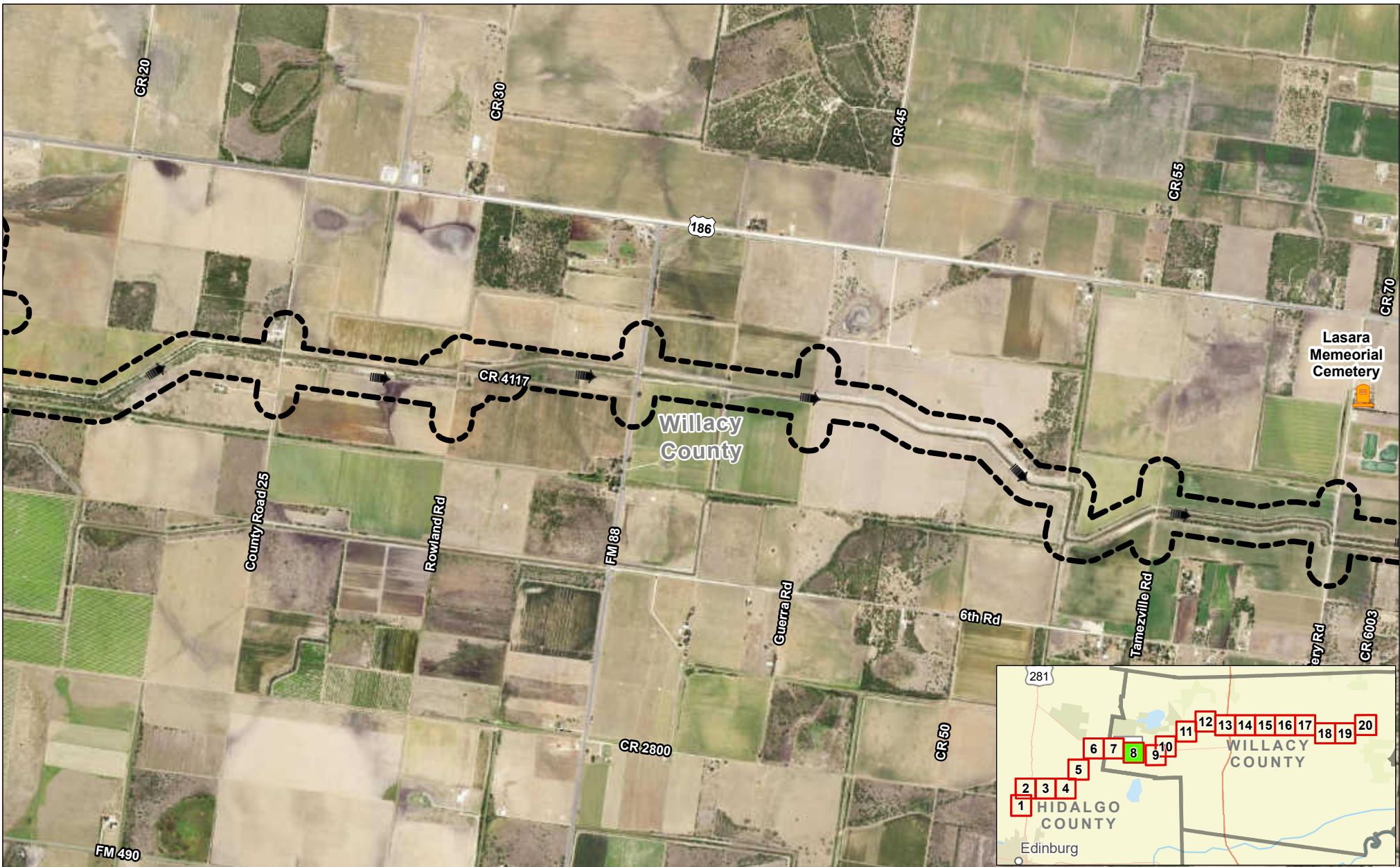


Exhibit 17 Alternative 1 Constraints Map Sheet 7 of 20 Raymondville Drain Project

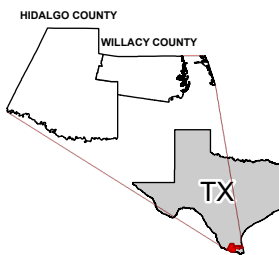
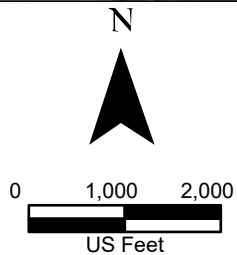
Author : Joel F. Aguirre	Updated : 12/14/2023
DISCLAIMER: RRP Consulting Engineers makes no guarantees as to the accuracy of data used in the construction of this map.	

Path: S:\project\440800_Prop\Raymondville\GIS\Map_Export\Exhibit_Series.aprx



Legend:

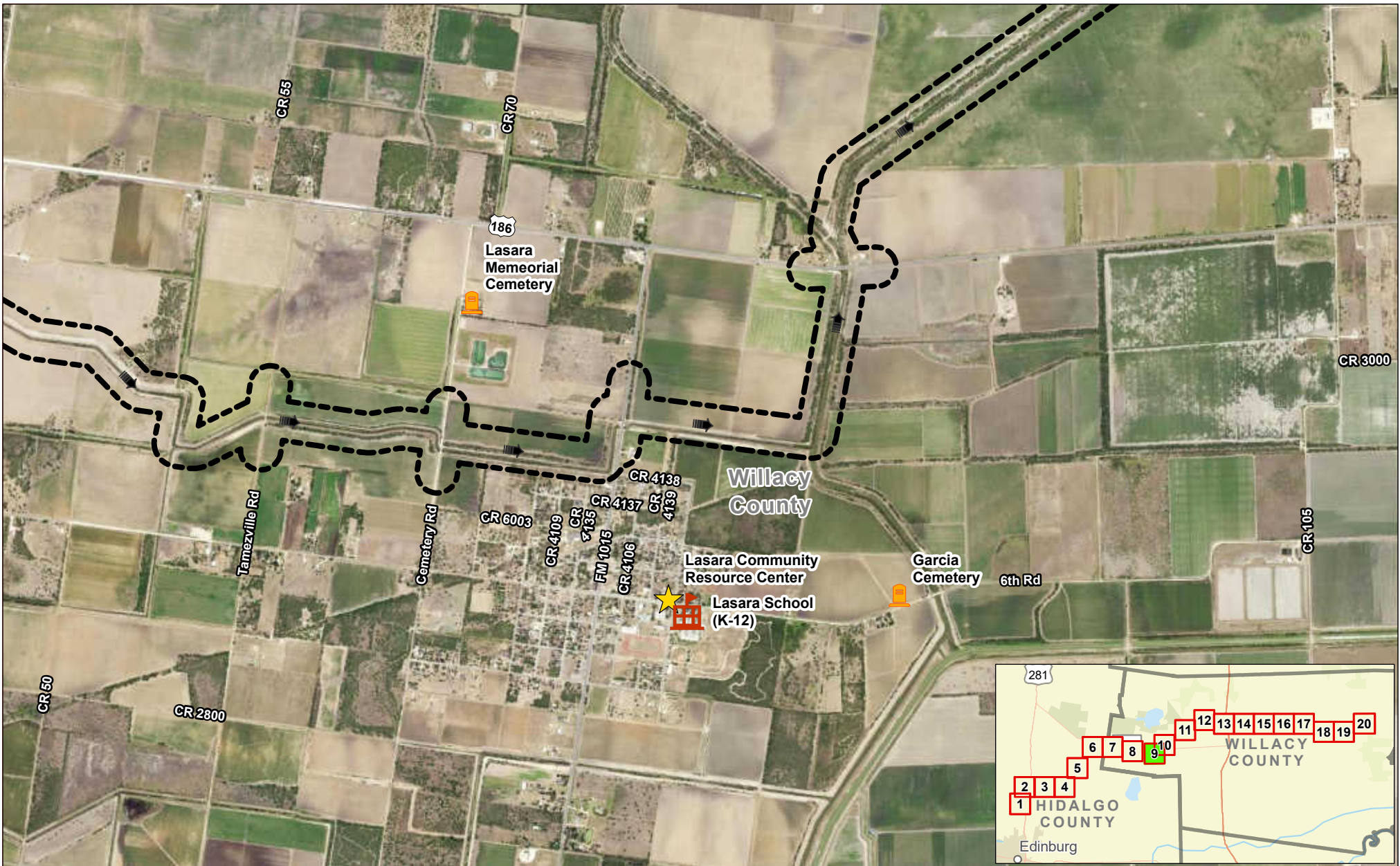
- Study Corridor
- Drain Flow
- Cemetery



**Exhibit 17
Alternative 1
Constraints Map
Sheet 8 of 20
Raymondville Drain Project**

Author : Joel F. Aguirre Updated : 12/14/2023

DISCLAIMER: RRP Consulting Engineers makes no guarantees as to the accuracy of data used in the construction of this map.



- Legend:**
- Study Corridor
 - Drain Flow
 - Cemetery
 - Community Center
 - Educational Facility

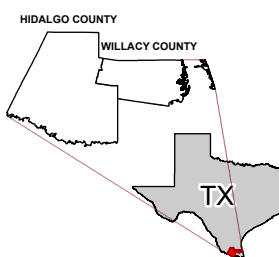
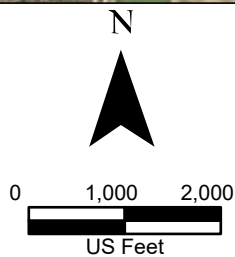
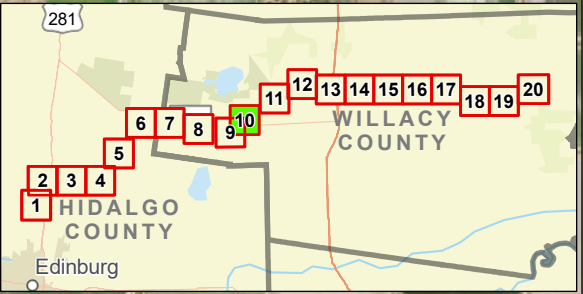
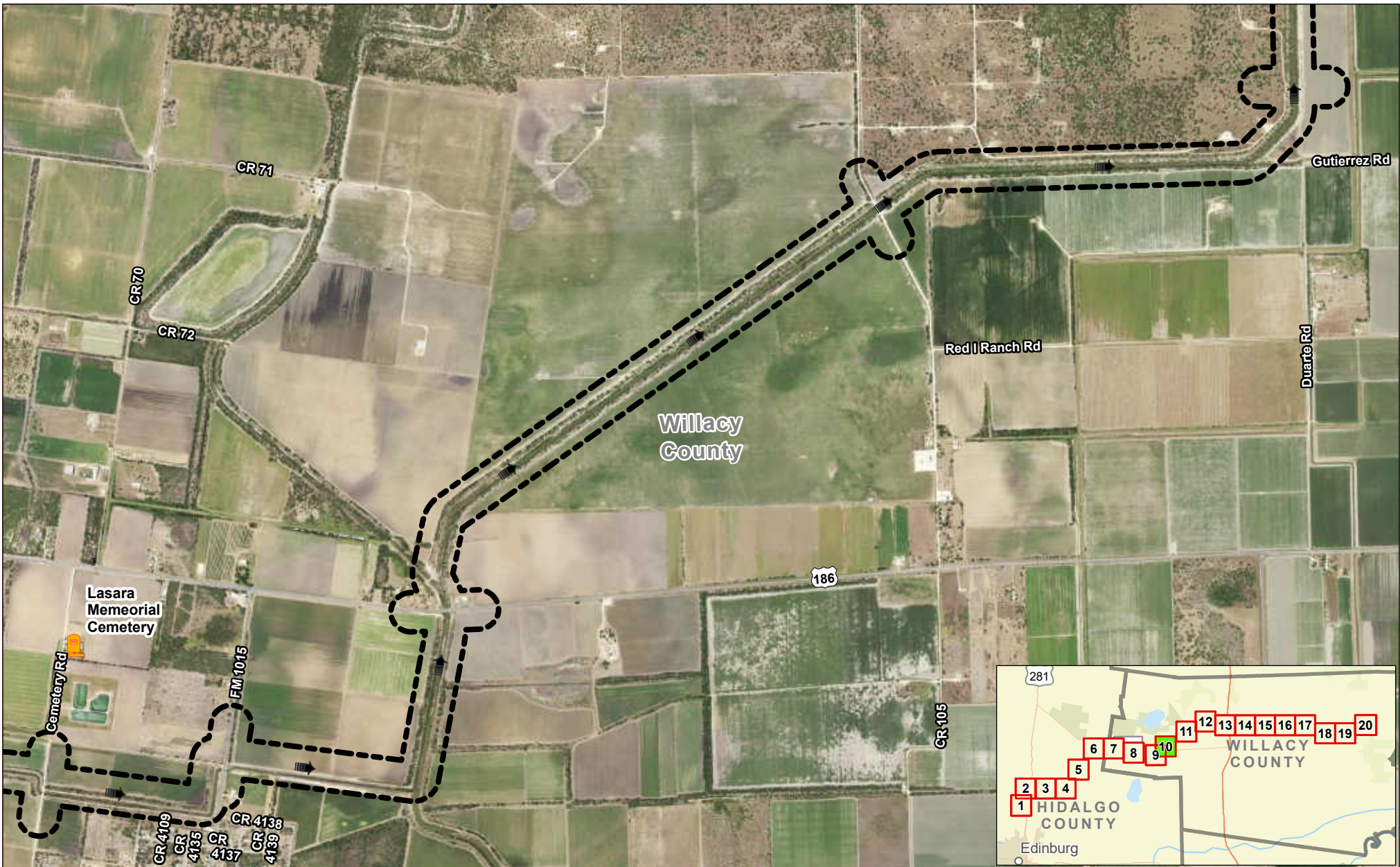


Exhibit 17 Alternative 1 Constraints Map Sheet 9 of 20 Raymondville Drain Project

Author : Joel F. Aguirre Updated : 12/14/2023

DISCLAIMER: RRP Consulting Engineers makes no guarantees as to the accuracy of data used in the construction of this map.



Legend:

- Study Corridor
- Drain Flow
- Cemetery

N

0 1,000 2,000

US Feet

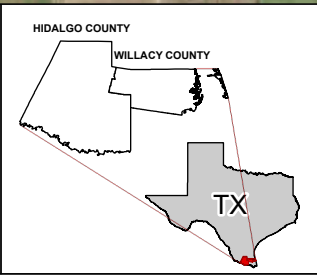
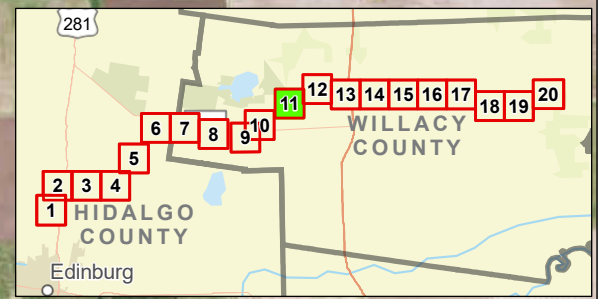
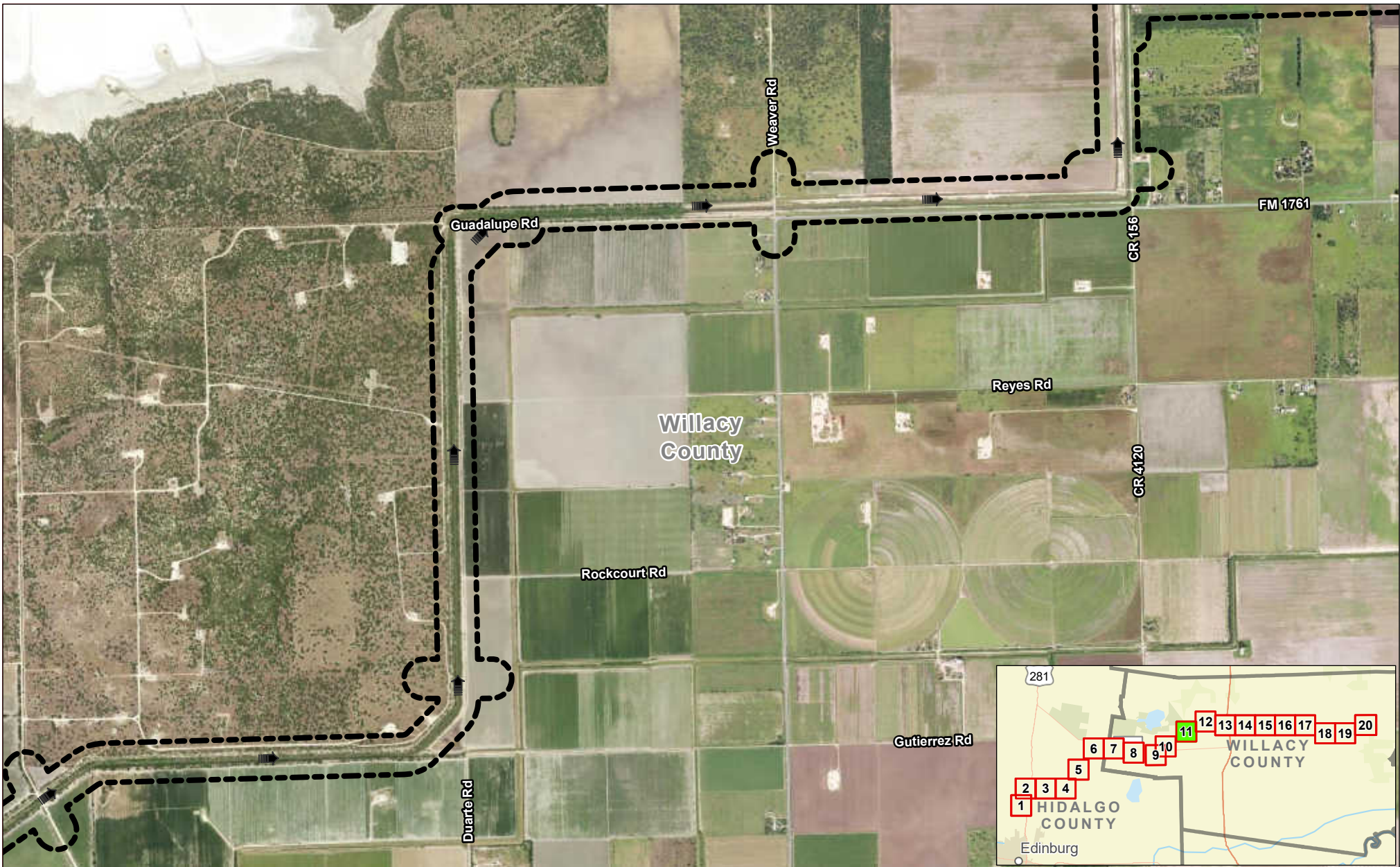


Exhibit 17 Alternative 1 Constraints Map Sheet 10 of 20 Raymondville Drain Project



Author : Joel F. Aguirre	Updated : 12/14/2023
--------------------------	----------------------

DISCLAIMER: RRP Consulting Engineers makes no guarantees as to the accuracy of data used in the construction of this map.

Path: S:\project\440800_P\ProjectInventory\GIS\PDF_Export\Exh_Sheet_10.apx



Legend:

-  Study Corridor
-  Drain Flow

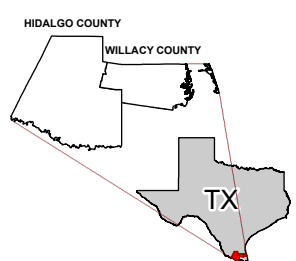
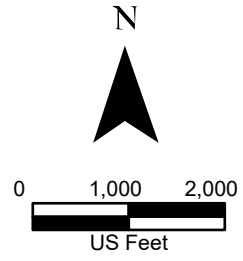
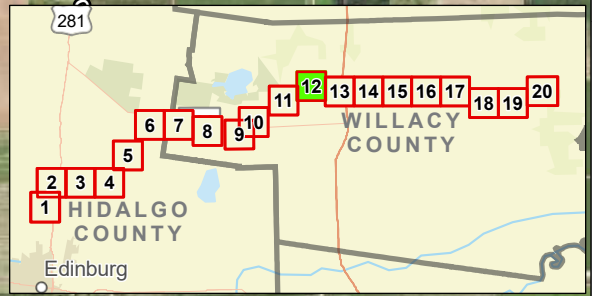
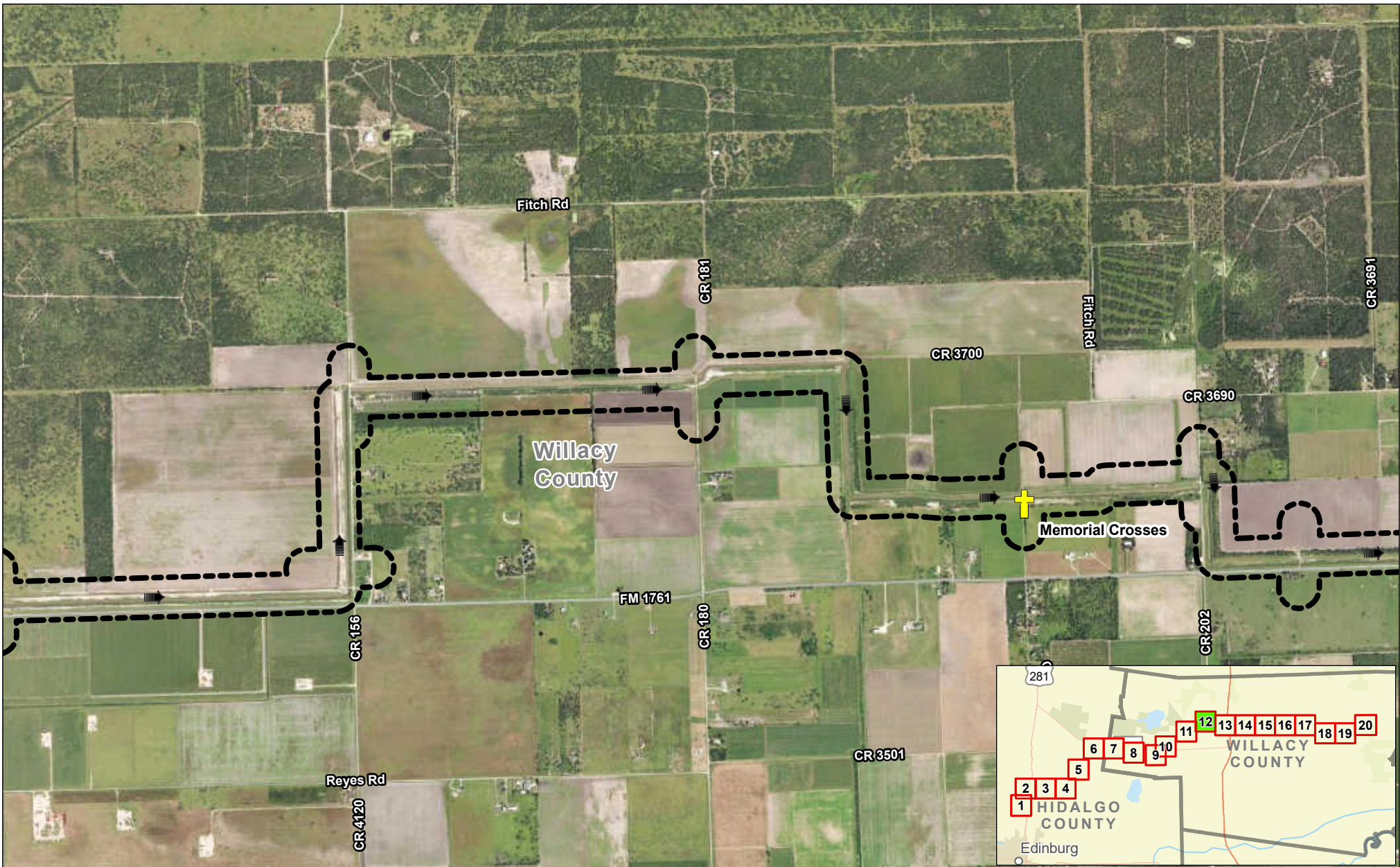


Exhibit 17 Alternative 1 Constraints Map Sheet 11 of 20 Raymondville Drain Project

Author : Joel F. Aguirre Updated : 12/14/2023

DISCLAIMER: RRP Consulting Engineers makes no guarantees as to the accuracy of data used in the construction of this map.



Legend:

- Study Corridor
- Drain Flow
- Memorial

N

0 1,000 2,000

US Feet

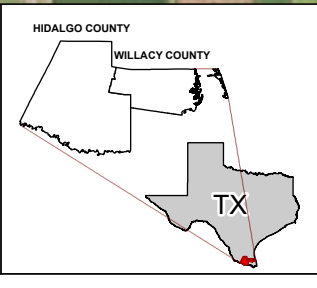
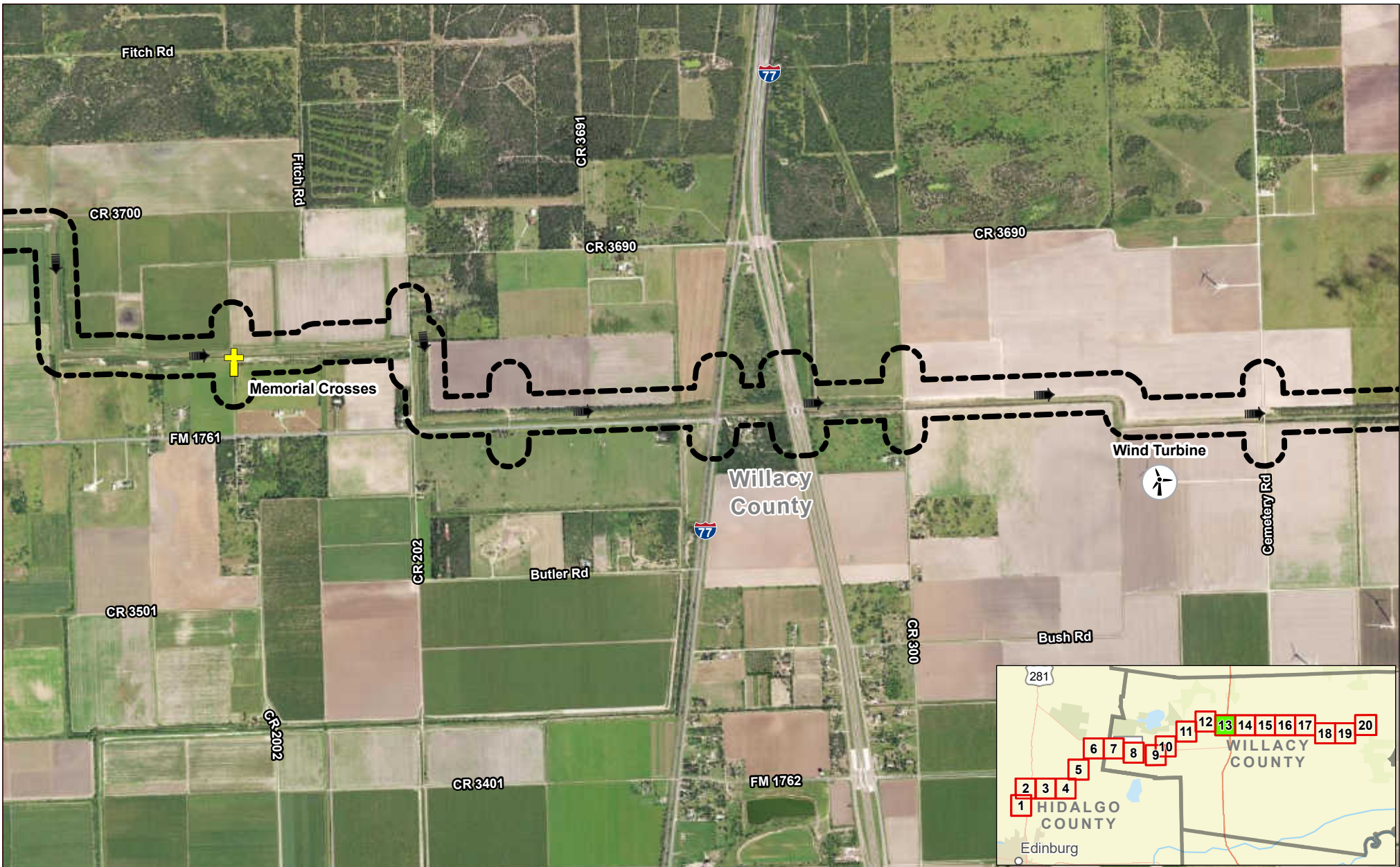


Exhibit 17 Alternative 1 Constraints Map Sheet 12 of 20 Raymondville Drain Project

Author : Joel F. Aguirre	Updated : 12/14/2023
--------------------------	----------------------

DISCLAIMER: RRP Consulting Engineers makes no guarantees as to the accuracy of data used in the construction of this map.

Path: S:\project\440800_Prop\Inventory\GIS\FOP_Encls-Encl_Series.aprx



Legend:

- Study Corridor
- Drain Flow
- Memorial
- Wind Turbine

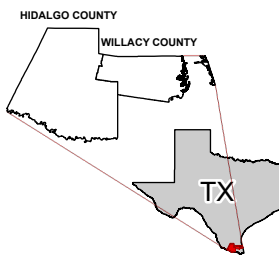
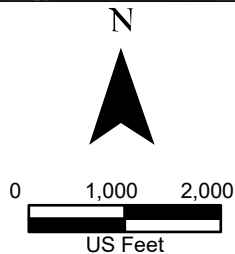
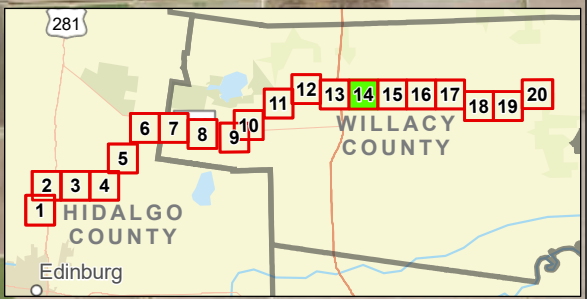
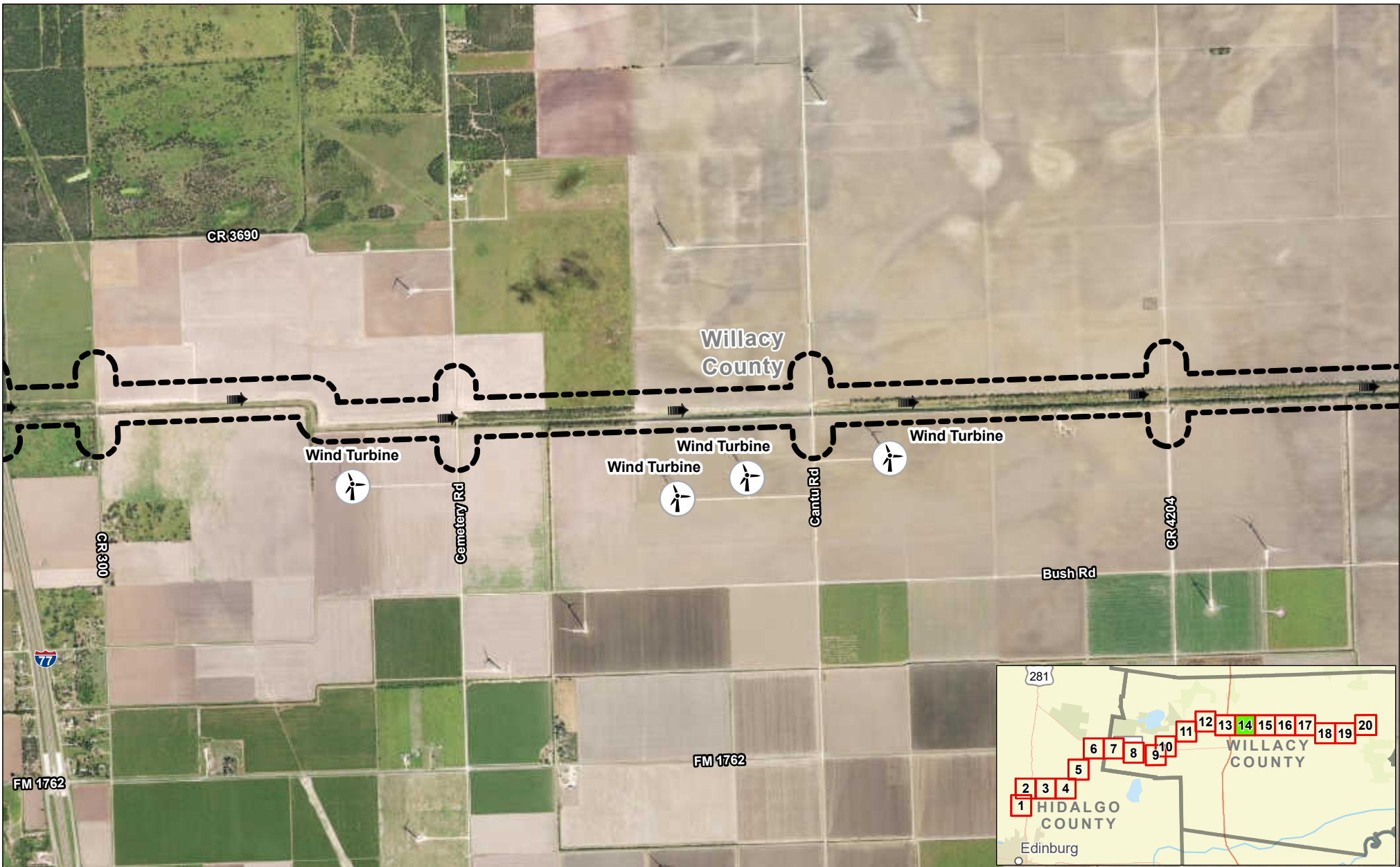





Exhibit 17 Alternative 1 Constraints Map Sheet 13 of 20 Raymondville Drain Project

Author : Joel F. Aguirre Updated : 12/14/2023

DISCLAIMER: RRP Consulting Engineers makes no guarantees as to the accuracy of data used in the construction of this map.



Legend:

-  Study Corridor
-  Drain Flow
-  Wind Turbine

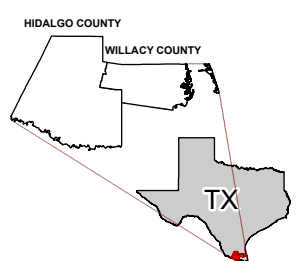
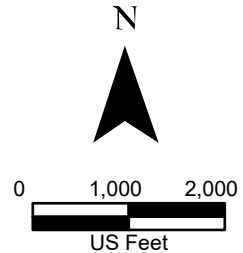
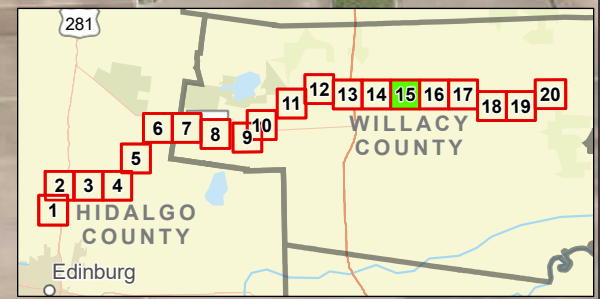
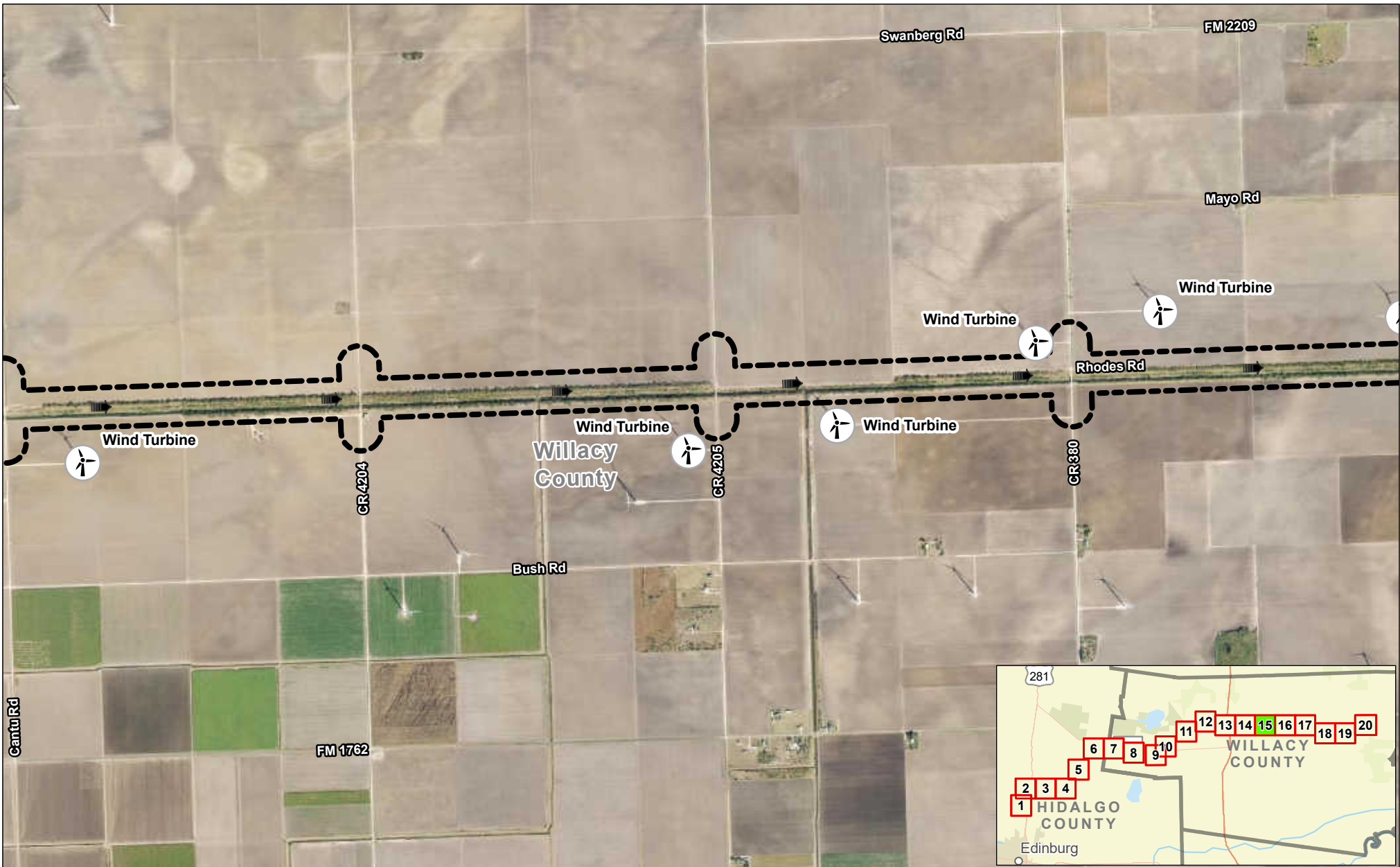


Exhibit 17 Alternative 1 Constraints Map Sheet 14 of 20 Raymondville Drain Project

Author : Joel F. Aguirre Updated : 12/14/2023

DISCLAIMER: RRP Consulting Engineers makes no guarantees as to the accuracy of data used in the construction of this map.



Legend:

- Study Corridor
- Drain Flow
- Wind Turbine

N

0 1,000 2,000

US Feet

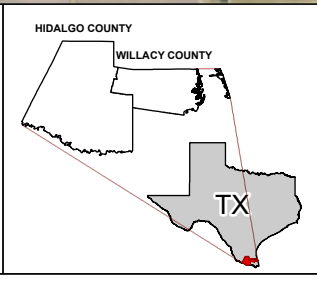
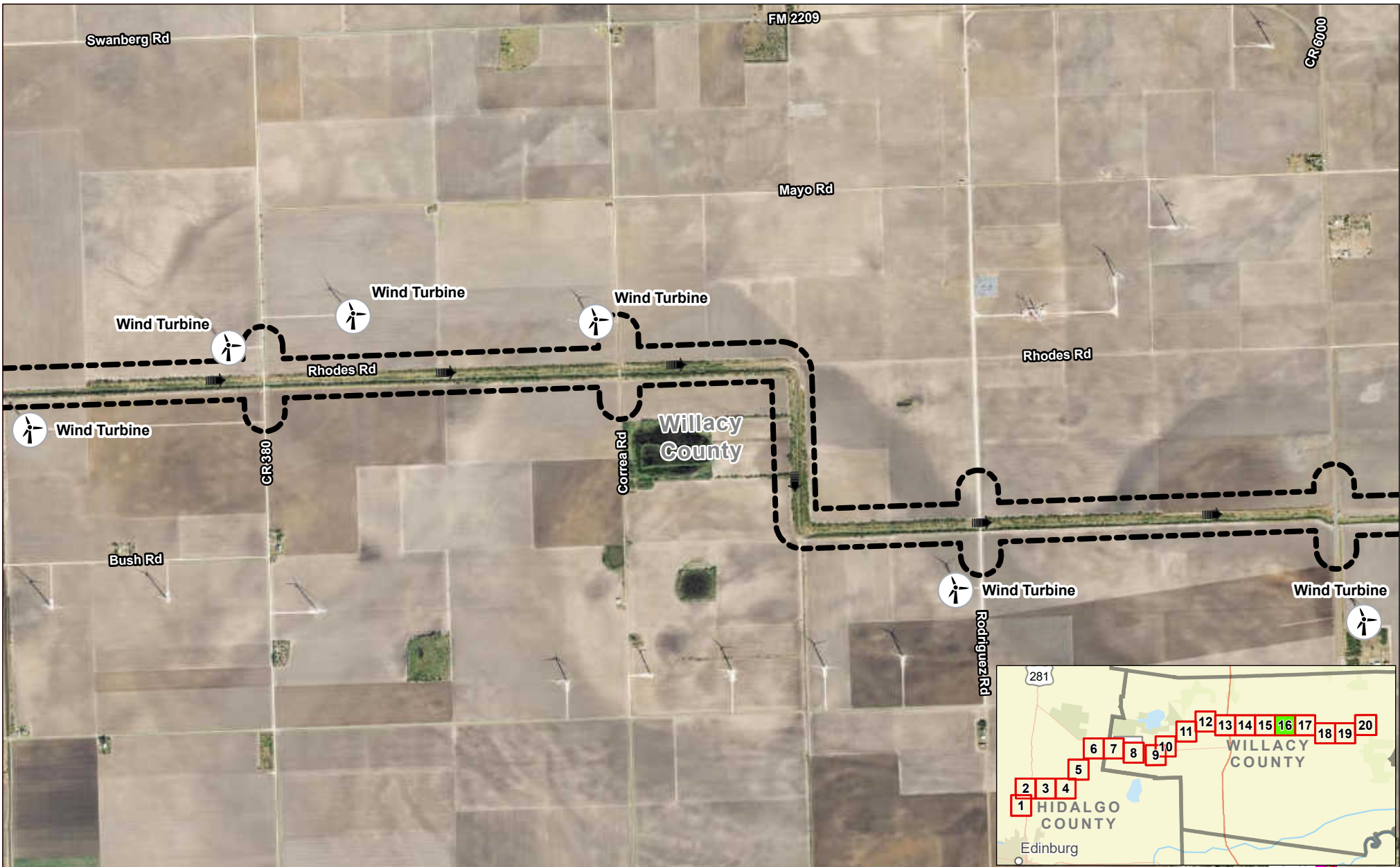


Exhibit 17 Alternative 1 Constraints Map Sheet 15 of 20 Raymondville Drain Project









Author : Joel F. Aguirre	Updated : 12/14/2023
--------------------------	----------------------

DISCLAIMER: RRP Consulting Engineers makes no guarantees as to the accuracy of data used in the construction of this map.


Path: S:\projects\440800_ProjectRepository\GIS\PDF_Books\Ex17_Series.aprx




Legend:

-  Study Corridor
-  Drain Flow
-  City Hall
-  Community Center
-  Educational Facility
-  Fire Department
-  Park
-  Wind Turbine

N



0 1,000 2,000



US Feet

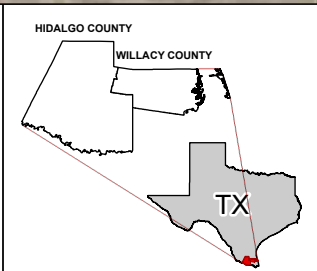


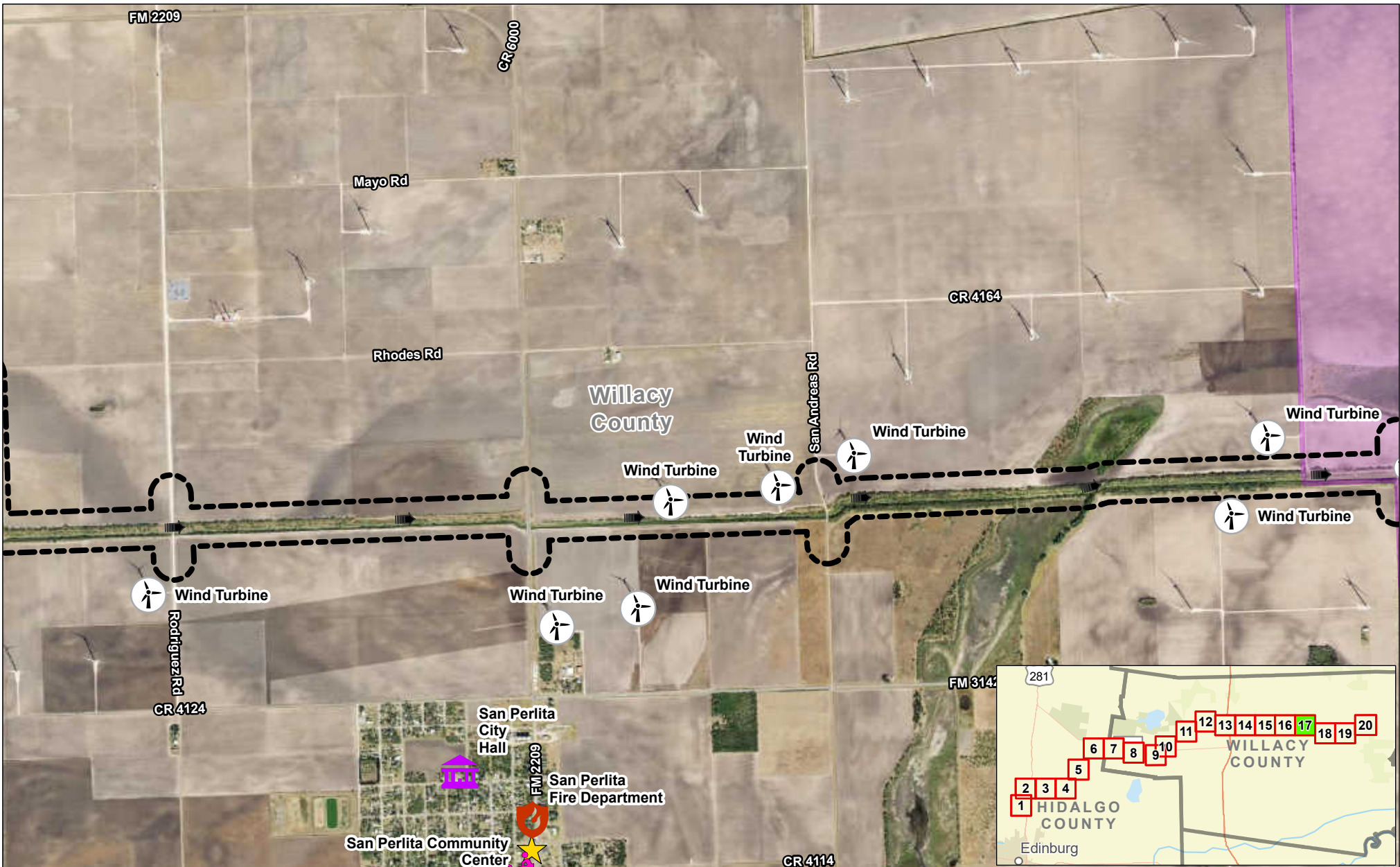


Exhibit 17 Alternative 1 Constraints Map Sheet 16 of 20 Raymondville Drain Project

Author : Joel F. Aguirre	Updated : 12/14/2023
--------------------------	----------------------

DISCLAIMER: RRP Consulting Engineers makes no guarantees as to the accuracy of data used in the construction of this map.

Path: S:\projects\440800_ProposedRaymondvilleDrain\Drawings\Drawings.dwg



Legend:

- Study Corridor
- Drain Flow
- City Hall
- Community Center
- Fire Department
- Park
- Utility
- Wind Turbine
- El Sauz Ranch

N

0 1,000 2,000

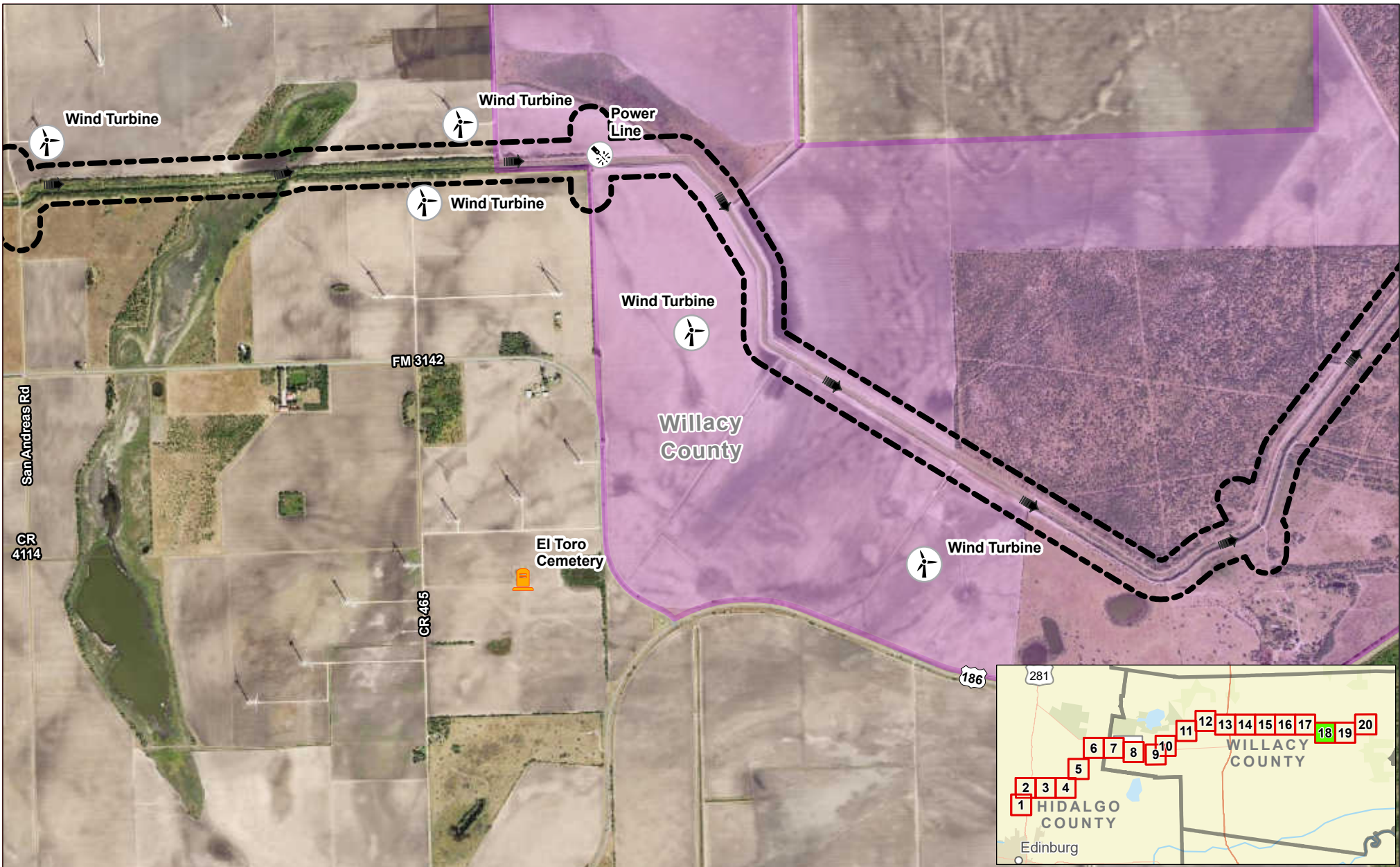
US Feet



Exhibit 17 Alternative 1 Constraints Map Sheet 17 of 20 Raymondville Drain Project

Author : Joel F. Aguirre	Updated : 12/14/2023
DISCLAIMER: RRP Consulting Engineers makes no guarantees as to the accuracy of data used in the construction of this map.	

Path: S:\projects\410800_ProjectRepository\GIS\PDF_Books\Exh_Series.aprx



Legend:

- Study Corridor
- Drain Flow
- Cemetery
- Utility
- Wind Turbine
- El Sauz Ranch

N

0 1,000 2,000

US Feet

HIDALGO COUNTY
WILLACY COUNTY

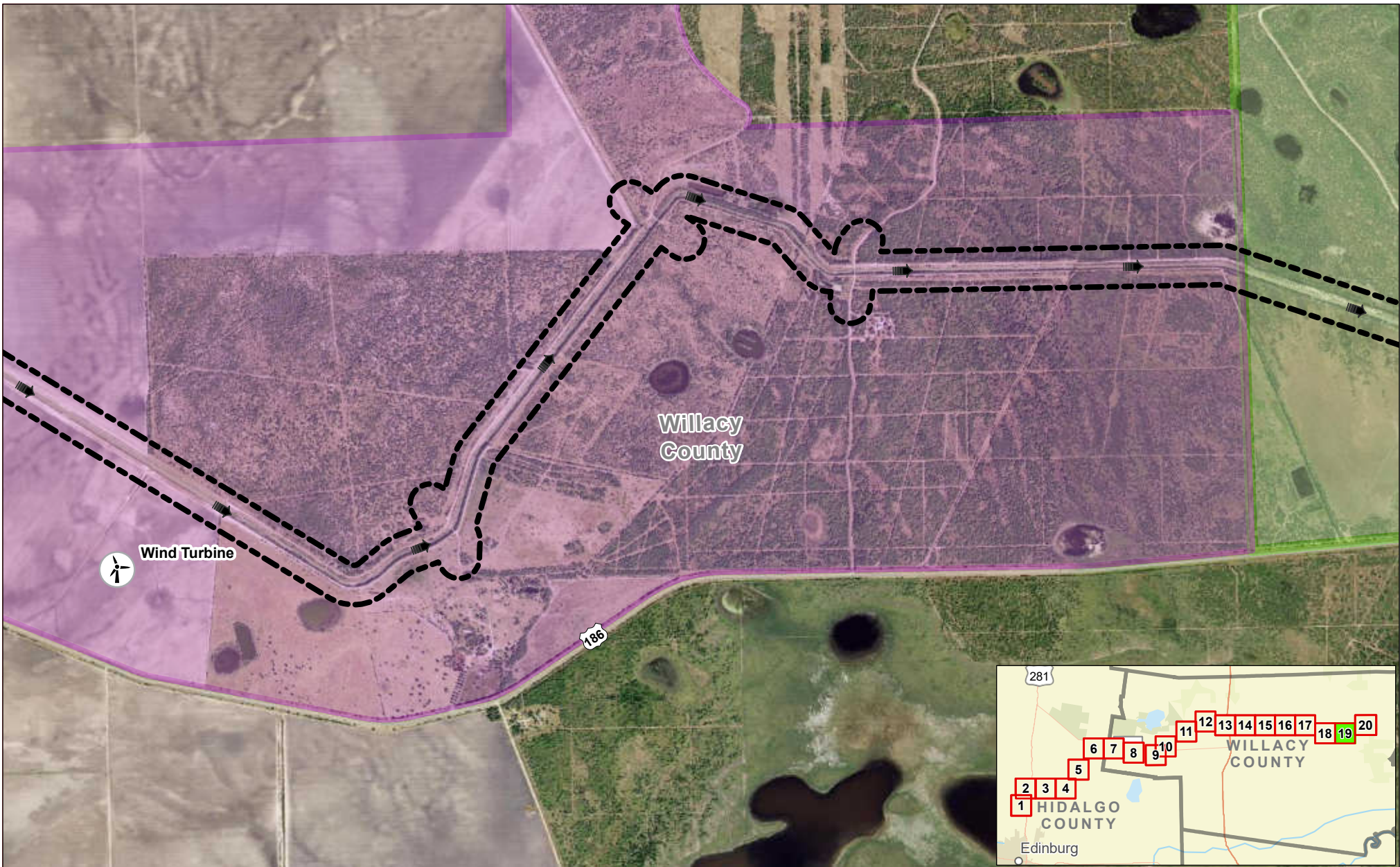
TX

Exhibit 17 Alternative 1 Constraints Map Sheet 18 of 20 Raymondville Drain Project

Author : Joel F. Aguirre	Updated : 12/14/2023
--------------------------	----------------------

DISCLAIMER: RRP Consulting Engineers makes no guarantees as to the accuracy of data used in the construction of this map.

Path: S:\project\418000_P\Project\Raymondville\GIS\PDF_Export\Exh-17_Sheet_18.aprx



Legend:

- Study Corridor
- Drain Flow
- Wind Turbine
- The East Foundation
- El Sauz Ranch

Data Provenance: ESRI World Map (2022), USFWS - National Realty Tracts (2022)

N

0 1,000 2,000

US Feet

HIDALGO COUNTY

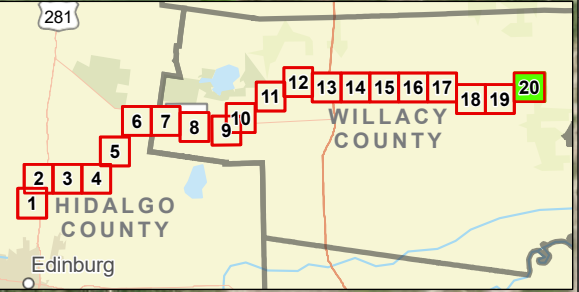
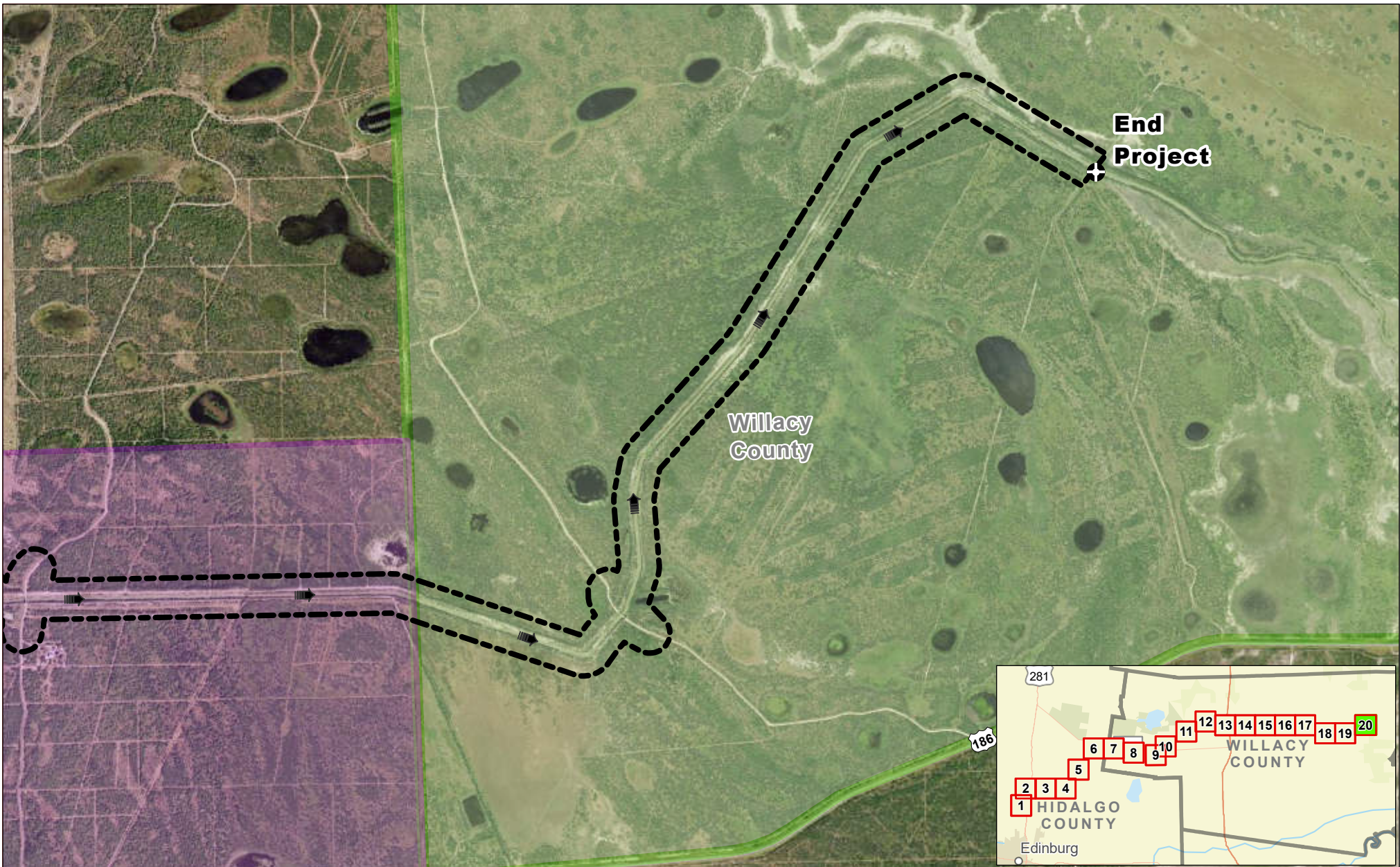
WILLACY COUNTY

TX

Exhibit 17 Alternative 1 Constraints Map Sheet 19 of 20 Raymondville Drain Project

Author : Joel F. Aguirre	Updated : 12/14/2023
DISCLAIMER: RRP Consulting Engineers makes no guarantees as to the accuracy of data used in the construction of this map.	

Path: S:\project\440800_Prop\Report\GIS\FCP_20230114_Series.aprx



Legend:

- Study Corridor
- Drain Flow
- The East Foundation
- El Sauz Ranch

N

0 1,000 2,000

US Feet

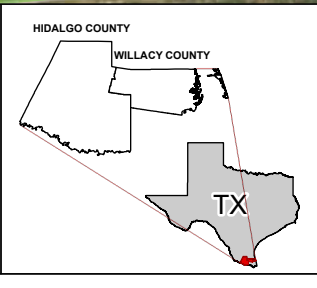


Exhibit 17 Alternative 1 Constraints Map Sheet 20 of 20 Raymondville Drain Project

Author : Joel F. Aguirre	Updated : 12/14/2023
<i>DISCLAIMER: RRP Consulting Engineers makes no guarantees as to the accuracy of data used in the construction of this map.</i>	

Path: S:\project\448800_Project\Raymondville\GIS\PDF_Books\End_Series.aprx